

ANAK Krakatau
The Father, The Son and The Tongues of Fire

Part Four

“CHANGE HAS COME TO AMERICA”

*...It's been a long time coming, but tonight, because of what we did on this day, in this election, at this defining moment, **CHANGE HAS COME TO AMERICA** ...*

*... Let us remember that if this financial crisis taught us anything, it's that we cannot have a thriving Wall Street while Main Street suffers - in this country, **WE RISE OR FALL AS ONE NATION, AS ONE PEOPLE....** Remarks of President-Elect Barack Obama, Election Night, Tuesday, November 4th, 2008, Chicago, Illinois [emphasis, smb]*

“A new birth of Freedom” was the theme of January 20, 2009 Inauguration of the 44th President of the United States. Before the 111th Congress and a live crowd of over 1.2 million, “Change” came to the historic shores of the River. Potomac, from the Algonquian is “something brought,” and it seems conspicuously appropriate. While “something brought” might be welcome words for some, the Algonquin Nation itself provides bitter deniability, as did the citizens of Troy.

Eight months after assuming the office of the Presidency, Mr. Obama was again on the stage, this time front and center of the theater of the world, for a series of scheduled political events in the city that claims the distinction as the first Capital of the United States, New York City.



Washington, DC
US Capitol, Washington Monument, Potomac River

*... it is my deeply held belief that in the year 2009 – **MORE THAN AT ANY POINT IN HUMAN HISTORY** — the **INTERESTS OF NATIONS AND PEOPLES ARE SHARED.** B.H. Obama, Address before the United Nations General Assembly, September 23, 2009 [emphasis, smb]*

For one week in September of 2009, the United States' waning political prestige left the District of Columbia and took front and center stage as the nations gathered for the opening of the UN General Assembly in New York. In a series of events that are only visible in retrospect, and still greatly clouded

by the convergence of multiple catalysts, Mr. Obama's recognition of this "*point in human history*" might be amended by only two words: "*to date.*"

"ON THE SIDELINES"

The *New York Post* described the "sideline" meeting between US President Barack Obama, Israeli Prime Minister Benjamin Netanyahu and the *Palestine Liberation Organisation's* President Mahmoud Abbas as "extraordinarily rare." The three, accompanied by their diplomatic representatives met on September 22 at New York's *Waldorf Astoria*, the site where Israeli archaeologist Yigael Yadin purchased the *Dead Sea Scrolls* 55 years earlier.



Entry Hall
The Waldorf Astoria, New York City

Expectations were low for substantive progress for the three day "Obama-Netanyahu-Abbas Trilateral" sideline conclave, but the meticulously dressed mediator, wearing a dove-gray necktie with silver-tongued eloquence polished to its finest could not disguise the unmistakable directive. Details of the discussions were vague, and summarized in a four minute statement.

... The United States is committed to a just, lasting and comprehensive peace in the Middle East. That includes a settlement of the Israeli -Palestinian conflict that results in TWO STATES, Israel and Palestine. In which both the Israeli people and the Palestinian people can live in PEACE and SECURITY and realize their aspirations of a better life for their children. ...

... And so my message to these two leaders is clear, despite all the obstacles, despite all the history, despite all the mistrust, we have to have to find a way forward. We have to summon the will to break the deadlock that has trapped generations of Israelis and Palestinians in an endless cycle of conflict and suffering..... B.H. Obama, *New York City, NY*, September 22, 2009

[emphasis, smb]



Photo: Charles Dharapak/AP

Israeli Prime Minister Benjamin Netanyahu, US President Barack Obama and Palestinian President Mahmoud Abbas, in New York, Tuesday, Sept. 22, 2009

Two pairs of two words that promise a clash of *wills* with eternal results.

I WILL ALSO GATHER ALL NATIONS, and will bring them down into the valley of Jehoshaphat, and will plead with them there for my people and for my heritage Israel, whom they have scattered among the nations, and PARTED MY LAND. Joel 3:2

For when they shall say, PEACE and SAFETY; then sudden destruction cometh upon them, as travail upon a woman with child; and they shall not escape. 1 Th. 5:3

[emphasis, smb]

During the three days that followed the historic announcement, *The Change* that had arrived in New York took on an interesting assortment of roles, each of which consistently revisited the theme of the Israel-Palestinian flashpoint:

A September 22nd address to the *Clinton Global Initiative*, a September 23rd address to the UN General Assembly, Presiding officer the September 24th UN Security Council opening before traveling westward to Pittsburgh to host the G20 Summit, and a ‘surprise’ announcement of Iran’s nuclear status on the 25th.

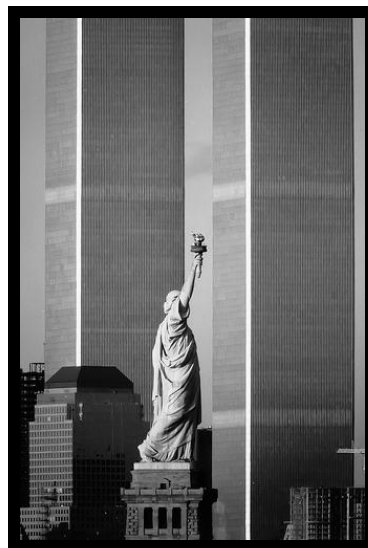
CAUSE AND EFFECT: Signals of a stronger hand

Behold, they spew out with their mouth: swords are in their lips: for who, say they, doth hear? But thou, O Lord, shalt laugh at them; thou shalt have all the heathen in derision. Psalm 59: 7, 8

In *The New Colossus*, Emma Lazarus contrasts New York Harbor's *Liberty's* purpose with that of her ancient Greek counterpart, the sun-god Helios as depicted in the *Colossus of Rhodes*. Standing 44 feet taller than the elder giant, *Liberty's* message is nearly as familiar as her torch: ***"Keep, ancient lands, your storied pomp!" cries she. With silent lips. "Give me your tired, your poor, Your huddled masses yearning to breathe free..."***



The Colossus of Rhodes



**Liberty Enlightening the World
*Babylonian Goddess Ishtar***

As the huddled masses entered through “golden gate,” to the cultural melting pot of the United States, there were no spiritual ‘baggage checks,’ but as freedom of worship has been the nation’s hallmark, so it has also been the instrument of its demise. Author Peter Levenda sees the United States as ***“a kind of a haunted house...what forces are really at work here?”*** Others find this spiritual amalgam more comparative to Revelation 12: ***Babylon the great is fallen, is fallen, and is become the habitation of devils, and the hold of every foul spirit, and a cage of every unclean and hateful bird.***

In *Eye to Eye: Facing the Consequences of Dividing Israel*, White House Correspondent Bill Koenig lists four event clusters which have historically ranked as the costliest to the US both in human and economic expense.

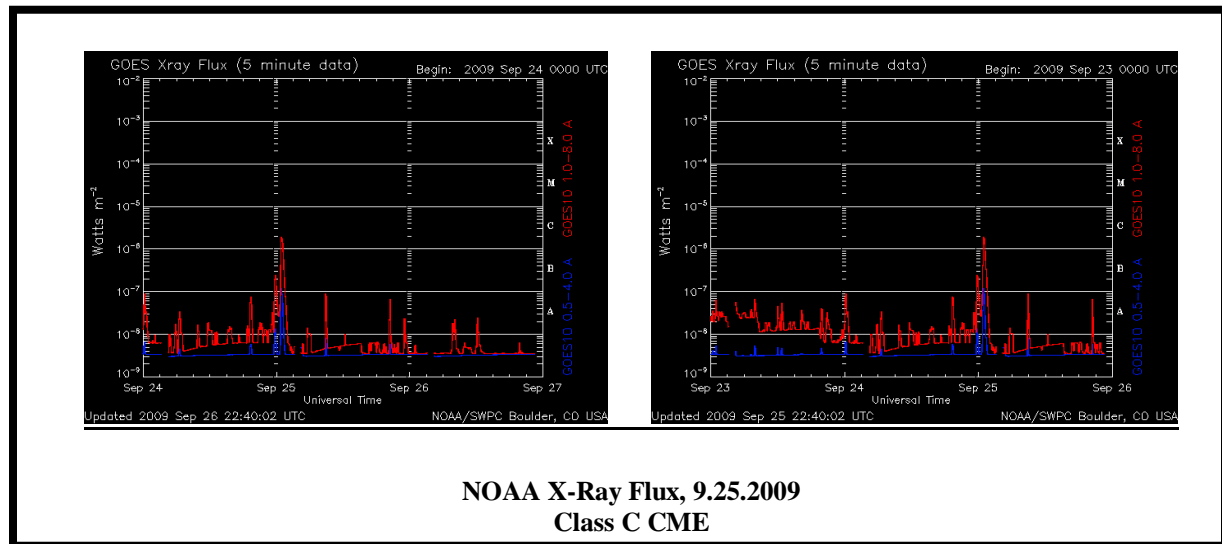
All of these major catastrophes transpired on the very same day or within 24-hours of U.S. presidents Bush, Clinton and Bush applying pressure on Israel to trade her land for promises of "PEACE AND SECURITY," sponsoring major "LAND FOR PEACE" meetings, MAKING MAJOR PUBLIC STATEMENTS PERTAINING TO ISRAEL'S COVENANT LAND AND/OR CALLING FOR A PALESTINIAN STATE.

Are each one of these major record-setting events just a coincidence or awe-inspiring signs that God is actively involved in the affairs of Israel?

[emphasis, smb]

SIGNS IN THE HEAVENS

An Ancient Endorsement or A Divine Response?



The above graphs demonstrate a very rapid increase in X-ray flux due to a perturbation on the sun's surface in the form of a solar flare. This flare is revealed by the sharp peaks just above the date September 25th in both charts. Solar flares produce emissions of various kinds, but the X-ray flux, shown here, is scientifically very diagnostic...and spiritually penetrating.

While scenarios involving catastrophic hurricanes, flooding, tornadoes and terrorist attacks are difficult to eclipse, one largely unreported but compelling event provides exceptional scientific and provocative spiritual interpretation. On September 25, within hours of Mr. Barack Obama assuming the Presidency of the United Nations Security Council and hosting the Opening Reception of the G20 Summit, two sunspots became visible on the surface of sun followed by the eruption of a Class C Coronal Mass Ejection.

Wired Magazine reports that two sunspots appeared on a sun for the “*first time in more than a year*,” adding that “*no sunspots have been visible on the sun for 80 percent of the days this year.*” NOAA recorded a singular and dramatic spike at the precise hour the world's media outlets and starry eyed devotees were elevating the “*citizen of the world*” to the “*King of the Universe*.” Was this a cosmic acknowledgment of the resurrection and coronation of the “sacred feminine” counterpart of the sun god, Helios - an endorsement from the vast akashic records of *the* coming imminent ‘singularity’ ascension? Or might it be the shot across the cosmic bow of immediate and devastating judgment by the hand of a righteous Creator?

‘DIS-Aster, “bad star,” earned an early reputation of impending cataclysm. Since September 22nd, 2009's comprehensive commitment to a “two states” on a “peace and security” platform as communicated by the President, the US has seen catastrophic geologic disasters in distant but decidedly direct areas. Suddenly a tightly worded affirmation takes on an entirely new concept: *falling as a nation*. On the very night a hope-filled Windy City announced the winds of Change which were

coming to “America,” an unusual, and perhaps prophetic, inference was included: **“WE RISE OR FALL AS ONE NATION, AS ONE PEOPLE”**

Earlier in this series the prophetic visions of three men were presented. An interesting pattern of time, geography and breadth is noted.

At the mouth of two witnesses, or at the mouth of three witnesses, shall the matter be established. Deut. 19:5

THE VISIONS

The early 2009 warning of DAVID WILKERSON included a foundational shaking, fires in cities of the US and inclusion of Psalm 11's terrifying description of burning wind and fiery rain. David Wilkerson spoke of US mainland specifically, New York and cities of the US East Coast.

The early 1990's vision of HENRY GRUVER included military involvement and scenes massive volcanism on the Western shores of the United States.

The early 1970's End Time Panorama of STEPHEN QUAYLE continues westward, far beyond and beneath the mainland of North America and into the deepest trenches and cavities of the earth itself.

Since September's trenchant “two states” assertion in New York, there have been a progression of disasters in both geography and intensity moving in a judgment pattern from east to west: flooding in Atlanta, wildfires in California and devastating seismic and tsunamic activity in American Samoa and Indonesia. Until the recent Presidential election there was no discernable ‘political’ relationship between the US and Indonesia. In November, 2008, the association between them has become one of murky transparency and concern.

The ensuing weeks have been comprised of markedly increased geologic activity. While seemingly distant, the deep stirrings beneath the surface of planet Earth are persistent and progressive - almost responsive and combative - and in a west to east contest.

While the majority of the population of the US is pathetically self-involved, there is nearly unmatched spiritual engagement just beyond a rapidly thinning veil. This myriad of raging entities contests not only the Christian God, but among the lesser ranks as well. Territorial spirits, long recognized within a Biblical context, are now being re-examined by science while cultural myths surfacing as celebrated spiritual experiences.

A STRANGE QUARTET

Volcanism, Solar Cycles, El Nino and Pandemics

It has been demonstrated that Solar Cycles are tied to the El Nino weather pattern, and that major pandemics are tied to El Nino. Solar cycle 24 will likely peak between late 2012 and early 2013. According to *Science Daily* (August 28, 2009) the 11-year solar cycle, the stratosphere, and the tropical Pacific Ocean work in sync to generate weather patterns which affect much of the globe.

According to John Jay Harper “solar flares have been equated with flu pandemics, as well as with increased earthquake activity and underwater volcanism.” The massive volcanic eruption of approximately January 1258, apparently in Central America or Mexico, caused a rain of sulfuric acid aerosols and tiny glass shards which changed the weather worldwide. Europe suffered cold weather and heavy rains which led to severe crop damage and famine. Pestilence and plague followed in 1258 and 1259, and very cold winters in 1260 and 1261 (Stothers, 2000).

According to Dr. Freitas’ *Sunspots and Disease* (1984) six of the major influenza epidemics going back at least to 1917 were synchronized with the sunspot cycle (or solar cycle). In most cases, the flu virus was able to develop a new coat of protein in an “antigenic shift” making it resistant to the immunities which the population had built up. This coat may have developed due to “penetrating radiation” which was enhanced during periods of high solar activity.

Oddly, a “new” type of El Nino has been forming much more frequently in recent decades, a “central Pacific” version of what was once almost exclusively an eastern Pacific phenomenon (Terra Daily, September 24, 2009). This odd El Nino pattern leads to horrific drought conditions in India, and has been strongly correlated with flu pandemics, specifically that of the infamous 1918 “Spanish” flu. Hardest hit was India, with approximately 17 million deaths which followed on the heels of these severe drought conditions.

The current 2009 El Nino is “moderate to strong” and mirrors the Central Pacific location of the 1918 version (Dr. Benjamin Giese, Texas A&M University, September 14, 2009. Aberrant El Nino anomalies have recently been discussed in radio interviews with Dr. Bill Deagle and research physicist Stan Deyo.

FURTHER SIGNS

The Solar Eclipse of July 22-22, 2009

A total solar eclipse occurs when the moon passes between the sun and the earth so that the sun appears completely covered. The spectacular total solar eclipse of July 22/21 was observed in central China, northern India, Bangladesh, Myanmar, and several Pacific Ocean island nations. From *Mythic Times: Total Eclipse of the Sun* an illustration of contemporary ‘ascension’ philosophy:

The Total Eclipse of the Sun on July 21/22 2009 (10:35 pm edt 7/21, 2:35 am gmt 7/22) has been called 'the most significant of the solar eclipse of the century' by astronomers. Astrologers believe this solar eclipse lasting over 6 and one half minutes will have influence for the next 6 and a half years according to the formula of Ptolemy.

In addition to it's extreme duration, this eclipse is significant because it occurs at the cusp of Cancer and Leo, one of the 9 'GATES OF INSPIRATION' in the year. EACH GATE IS IDENTIFIED WITH A GREEK MUSE, this one, Terpsichore, the Muse of Music and Dance <http://en.wikipedia.org/wiki/Terpsichore>.

Perhaps related to this Muse is the mystical magical MARY MAGDALENE whose feast day also happens to be July 22nd.

As if the political and pandemic issues weren't enough for the U.S. government to worry about, NASA has been ordered to "bomb the moon" on October 9, under the pretense of a search for water. This double-impact bombing will target a pre-existing crater near the moon's south pole. For this bizarre mission, NASA will be utilizing their aptly-named **Centaur** booster rockets

TURF WARS

The Territorial Lava Rocks of Hawaii

Some of the most persistent, bizarre and repeatedly documented accounts come from visitors to the volcanic hills and beaches of Hawaii. According to legend, the Goddess Pele will curse anyone removing volcanic rocks or artifacts from any of her Hawaiian islands. This curse seems to involve all types of bad luck in ever-increasing doses, including job loss, serious illness and death.

There are scores of websites and companies which provide individuals a means to return 'souvenir' rock taken from Pele to Hawaii. Once the content for tabloid sensationalism, the rocks themselves have recently been granted quiet examination status in the labs of progressive physics departments. Many volcanoes have similar accounts, but Pele in particular has a disproportionate frequency of unusual and troubling attachments.



Why would the Hawaiian lavas be more territorial than others? Perhaps the legends of Pele sacrificing her body in the building of her islands should be examined through the lens of the ancient accounts. Native Hawaiians talk of “Pele’s bones”, Pele’s tears”, and Pele’s hair.” Her bones are represented by broken lava pieces all over the islands. When the eruption velocity is high, Pele’s delicate hair is produced; when the volcanoes eruption velocity is low, she sheds her tears.



Pele's Tears as scaled to a US dime

Former IBM engineer Marcel Vogel again asserts that crystals, granite and water all have memory: vibrations can be trapped within a material and stored to be later retrieved via lasers. Crystals, granite and other stones when interfaced with metal conductors can be activated by use of identical vibrational frequencies.

Zacciah Blackburn of *Sacred Sound, Sounding the Codes* believes, ***What many do not know is that many ancient cultures anchored or stored their wisdom through vibrational frequencies in the stones of their ancient temples.***

It is not mere co-incidence many of the ancient stone temples of the world were made with crystalline embedded stones, such as granite, which are known for their properties to pass or store energy. It is no longer a mythical metaphorical approximation to speak of the 'symphony' of the cosmos.

Stone monuments and rock outcroppings have served as sacred destinations for millennia, and though once confined to the realm of science fiction, the study of 'exotic matter' is now a cornerstone of the altar of quantum science.

Volcanoes have similar appeal to spiritual questers, but their unmatched and violent unpredictability has historically drawn a far darker and exclusive following. Formed by heat and pressure, volcanic magma and ash are violently unbound, and launched into a foreign surface environment. For a serious scientist, the frequency and similarity of experiences described by the custodians of the goddess Pele's spawn presents an uncomfortable hypothesis.

higher proportion of silica. The Indonesian magmas and lavas also contain a higher proportion of dissolved gases, the main contributor to their explosiveness.

The Journeys of Pele

The Hawaiian legend that Pele came from “a foreign land” but is now “home” where she belongs and will never leave, is intriguing. Where, might we ask, *is* this foreign land? We know that Pele was consumed with wanderlust, and traveled from land to land. Perhaps she traveled the entire ***Ring of Fire***? Perhaps she left evidence of her journeys within the hardened lava of these distant shores? Well, now she is home, on the newest volcanoes of all, those of the Hawaiian islands, specifically having taken up residence on Kilauea. But where *was* Pele just before she arrived in Hawaii?

To answer that question perhaps we must first trace the origins of the ancestral Hawaiians, namely the Polynesian people. The existence of pottery shards in the islands of central Polynesia resembling those found in Melanesia and even Southeast Asia provides a strong argument for an ***EASTWARD migration of ancestral Polynesians*** from Southeast Asia (including Indonesia and Malaysia). Additional evidence points to a 2900 year old fishing village in Tonga as the first *true* Polynesian settlement (i.e. without outside influence). These new Polynesians later moved into Samoa, continuing their general eastward migration.

Finally, it is quite well established that Hawaii itself was first colonized by Polynesian peoples. Therefore, we can clearly identify an eastward-trending Pele journey from the Indo-Malay region to Melanesia, then Tonga, then Samoa, and finally Hawaii. We can only speculate as to whether or not she made other stops along the way. However, we now have a strong ancestral and spiritual goddess connection linking Indonesia and Hawaii. Genetic (DNA) evidence also supports this migration.



Pele, goddess of volcanoes and fire

BOUND SPIRITS

Everlasting Chains in Great Darkness...

The amazing territorial aspects of the Hawaiian lava rocks have been discussed earlier in this section. Is there a geologic or chemical explanation for this stunning occurrence? Certainly, we could look upon the gases which were trapped within the magma as “spirits”, as spirits exist in gas form, after all. These spirits have an identity, as well as a “body” which they connect to. The body would be the area of their specific home volcano.

Yet perhaps the primary reason that Pele is so territorial, is that she has at long last found a home- a home in America’s 50th and final state: a ‘jubilee’ of sorts. She is where she belongs. And America has *yet another powerful goddess*; this one guarding her far southwestern gate . . . Pele, the Indo-Malay transplant. Concurrently, at America’s main northeastern port, the Babylonian goddess Ishtar beckons visitors.

“THE DREAM THAT SHOOK THE WORLD”



The history of the father “Krakatau” has already been discussed throughout this series. A British version of this name also in use today to describe the parent volcano is “Krakatoa.” Keeping in mind that the name “Krakatau” has been in use since approximately the early 1700’s, what follows is a true, yet bizarre twist on the events of late August, 1883.

In Boston, Massachusetts, on a Sunday night the 26th of the month, a reporter for the *Boston Globe*, Byron Somes, had far too much to drink with some friends, and decided to pass the night on a shabby sofa at his office. It was not to be a restful sleep! He tossed and turned, with vivid images pouring through his mind. He dreamt that there was a picturesque tropical island, composed of a large volcano, which suddenly began erupting furiously. In his dream, he felt that he was really there, as though he was witness to these events from above.

He could hear the screaming and anguished cries of the islanders, sense the strong shaking of earthquakes, and feel the heat of lava and ash. He witnessed a fountain of lava exploding from the top of the volcano's cone, and rivers of lava pouring down the sides, followed by a huge tidal wave hurdling toward a small village. Ships were tossed and turned wildly by massive waves and walls of pyroclastic mud blanketing the landscape. All the time, he kept hearing in his mind the word "**Pralape**." At the end of his dream, there was a terrific explosion, and he saw thousands of people perishing from the lava, ash, and gigantic wave, after which the island disappeared abruptly into a subsea crater.

Mr. Somes awakened in a start and staggered to his feet, dripping with perspiration, obviously intensely affected by what he had witnessed. He immediately wrote down his visions, scrawled the word "IMPORTANT" across the top, and left for his house. He did not report for work on Monday, still suffering the effects of his drinking binge and the disturbing images of the dream he had witnessed.



Apocalyptic Sueño (Dream)- Pralape

Later on Monday morning, the newspaper editor went into Mr. Somes' vacant office and found the paper marked "IMPORTANT" on his desk. Thinking it was a news story that had come in by telegraph during the night; he put it on the front page of the *Boston Globe* as a two-column story under a banner headline. Soon, other newspapers had picked up the story off of the Associated Press wire and it was widespread. None of these journalists could find the island "Pralape" on any current map, however, so they had to describe it as "a distant volcano." Several journalists contacted the *Globe* headquarters, asking for more information on the event, or for any type of supportive evidence.

Quickly, Mr. Somes was called into the chief editor's office where he was asked for documentation on his sources. He finally had to admit that his story was only a dream, upon which admission his employment was immediately terminated.

Afterwards, the *Boston Globe* management quickly typed up an apology letter to send out. However, it was never released, for reports of high tides being observed around the world were pouring in, and there was word out that the explosion had been heard all the way to northwestern Australia. Geologists were

puzzled by seismological disturbances, and began to trace their origin back to the Straits of Sunda. Reports were soon coming in from ship captains who had witnessed the terrible eruption of the island of Krakatau.

Several days later it was confirmed: *the island of Krakatau had erupted massively on August 27, 1883, at essentially the same time Byron Somes was dreaming about the destruction of Pralape.* Byron Somes was reinstated as a reporter for the *Boston Globe*. But what of the name “Pralape”? The Dutch Historical Society produced a map of the Indonesian archipelago which dated from the early 1700’s. On this map, Krakatau, in the center of the Sunda Strait, was listed by its ancient name in the indigenous native tongue: ***Pralape***.

The Byron Somes’ dream is today considered a classic case of clairvoyance, which can be defined as “seeing a scene at a location that is distant, and at the exact same time.”

The origin and meaning of the word “Pralape” is likewise fascinating. In 17th Century Dutch, the root word “pral” means “to flaunt, parade visually, or display.” In the related Swedish language, “pral” pertains to a “pretentious display” or “exhibiting.” In Spanish, “pral” translates as “main” or “of principal importance.” Within the Haitian Creole text of the King James Version of the Bible “pral” means “confounding.” Moreover, there a linguistically similar word, “Pralapre,” in the ancient tongue of certain indigenous Indo-Malay people groups which has a reference to a translation of “fire upwards.”

A “*confounding, pretentious display of an upwards fire*” is certainly an apt description of this ostentatious volcanic island which changed the world in 1883, and whose rapidly evolving offspring is poised to change the world yet again, arguably in the *very near future*.

NOAH’S ARK and KRAKATAU

Mount Ararat & The Sunda Strait

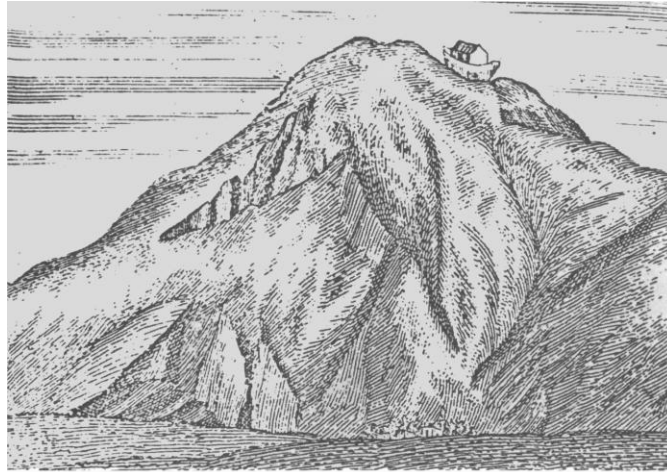
The fountains of the great deep

In 2007, Rene Noorbergen, a highly respected professional journalist and foreign correspondent, published “The Ark View” in which he states the following: “In 1883 major newspapers around the world carried stories of the sighting of ‘a huge dark mass protruding twenty or thirty feet’ from a glacier near Bayazid, Armenia in the Ararat mountain range. Explorers spoke of strong superstitions and fear among the villagers, including the sighting of a ‘spirit of fierce aspect’ gazing from the upper portion of the structure. It was believed that the structure was most likely the remnants of the Ark of Noah, *hidden until this time.*”

An expedition was organized in order to investigate the claims of the villagers, to be jointly carried out between the Turkish Commission and the crew of British Captain Gascoy. Curiously, “*the expedition was cancelled because of seismic activity: on the precise days of the final catastrophic explosions of Krakatau.*” [emphasis, cm]

However, several Armenian villagers in later years did locate the ark. Probable, published sightings of Noah’s Ark on the general northeast side of Mount Ararat include:

Sir John Chardin, 1600's. Several villagers (unknown Armenian village) told Sir John Chardin that the ark was situated on the northeast side of the mountain, just above the gaping Ahora Gorge.



A crude sketch by Chardin in 1686 showing Ark located on northeastern side of Ararat as described to him by the natives at that time.

Haji Yeamam, 1856. He lived at the foot of “Greater Mount Ararat” in what was then Armenia. According to his family traditions, the Yeamam’s were descended directly from those who came out of the ark, and had never migrated from that country. Mr. Yeamam stated that “the mount where the ark had come to rest had a little valley surrounded by some small peaks about three-quarters or more up on the mountain.” He retells the story of some scientist “enemies of God” who attempted to find the ark to prove that it did *not* exist. These men hired local guides, and while attempting to scale the mountain an intense storm came up, wiped away the trail, and forced them to retreat. The Christian villagers took this as a sign that “***God did not want the ark disturbed until near the end of the world,***” when they believed that its presence would be revealed to the whole world.

George Hagopian, 1902-1904. An Armenian villager who, as a boy, twice visited the ark with his uncle and *actually climbed on top of it*. He has been extensively interviewed about his findings, and these taped interviews are available today. His general description of the ark is as follows: “long, and made of wood like stone. It was near a very high cliff, sitting on a large rock and surrounded by snow.” These eyewitness accounts of George Hagopian are the most impressive of all ark accounts. He never varied his story over the years, he had a very good reputation in town as an honorable man not given to lying or fabrication, and he even took and passed a PSE (lie detector) test. Mr. Hagopian was interviewed by both Mr. Rene Noorbergen and Mr. Alfred Lee, and the transcribed interviews totally confirm and validate each other.

These are important historical eyewitness accounts of the ark which are summarized by Spencer & Lienard (2009) as such:

“Most sources describe the ark as being between two-thirds and three-quarters of the way up the north/northeast side of the mountain (Ararat/Masis), in a small wooded valley surrounded by small peaks, near a high cliff, with part of the ark submerged in a small lake or swamp and partly covered with snow and ice. Most also describe the ark as being made of a dark brown wood as hard as stone, but with the

grain still visible—like petrified wood. *These reports are completely independent and span over one hundred years.* [emphasis, cm] These reports would place the ark at an elevation above 13,000' since the mountain juts out of a high plateau already several thousand feet in elevation. This is certainly at a reasonable enough altitude that many of the villagers from Bayazid in 1883 might have been able to actually view it from part way up the mountain.

It is our contention that the ark will be revealed in the last days as a “sign” that we are indeed “as in the age of Noah.” This “revealing” might well take place after a seismic event, i.e. earthquake or volcanism. Mount Ararat is an active volcano. As recently as 1840 the Monastery of St. Jacob at the foot of the mountain, *on the northeast flank*, was buried by a volcanic eruption-induced landslide which covered the entirety of the ancient village of Agouri. God next allowed the massive volcanic eruption at Krakatau (1883), precisely 5,000 Statute miles away, to interrupt a planned expedition to the ark. Will God reveal the Ark of Noah in the near future? Will He use a tectonic event as a “*Days of Noah*” sign?

**COLOMBIA and Those who descended from the Sacred Mountain of Creation
The Antipode of ANAK
Harbinger of Destruction**

In 1962, Sir Geoffrey Ingram Taylor published his “*Scientific Papers, Volume 4- Mechanics of Fluids*” in which he discussed the massive eruption of Krakatau in 1883 and the subsequent gravity-controlled atmospheric wave which circled the earth several times. Mr. Taylor considered the “antipode” of Krakatau to be Bogota, Colombia. An antipode is that spot on the earth diametrically opposite of the starting point. Well, his was a rough calculation; the true antipode of Krakatau is certainly within the country of Colombia, but is about 135 mi. north-northwest of Bogota. It is essentially on the Yuma/Magdalena River at a point almost due East of Medellin.

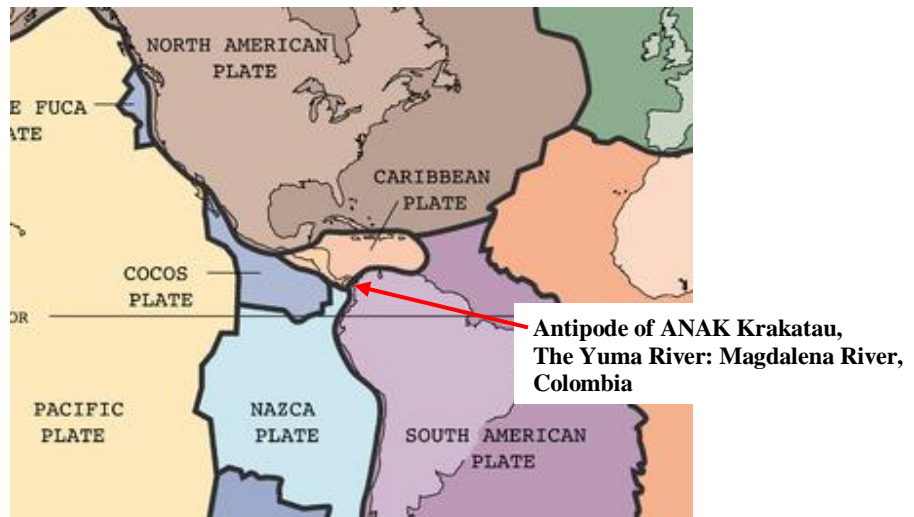


**Colombia, including the Yuma/Magdalena River
Despite the similar appearances of the two rivers on this map.
The Magdalena is significantly wider and more navigable than the Cauca to its west.**



The antipode of Krakatau is in yellow, near image center.
 It is approximately *2/3 of a mile from the Magdalena River*.
 Geomorphologic features reveal that *this location may actually represent an old meander loop of the Magdalena*.
 Interestingly, the parent Krakatau is *2/3 of a mile from Krakatau*.

Amazingly, the Krakatau antipode is also the approximate surface expression point of a *subsurface three tectonic plate juncture*, an extremely rare type of contact point. These three tectonic elements are the South American, Nazca, and Caribbean Plates. The following map shows the *surface juncture point* of these plates.



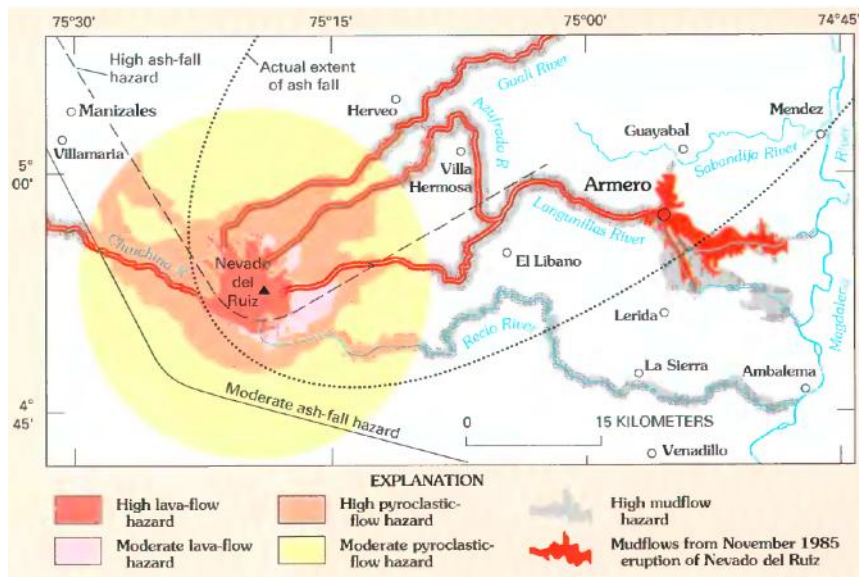
Note *surface juncture point* of Caribbean, Nazca, and South American Plates in NW South America (Colombia).
 The actual *subsurface plate juncture point* is represented by the Yuma/Magdalena River Valley.

As might be expected, this portion of Colombia, since it is within the *Ring of Fire*, is an extremely volatile area tectonically. There have been nineteen major earthquakes of greater than 7.0 magnitude since Spanish colonization within this limited region of study corresponding to the **Yuma/Magdalena River Valley**. Some of these quakes were so powerful that damage was incurred 250 miles from the epicenter. Eyewitness accounts by villagers refer to "*mouths opening*" near the **Yuma/Magdalena River**, and landslides which blocked the main river channel. In keeping with the complexity of the tectonic

environment at this triple plate juncture, a single earthquake can be associated with different geological faults (Lalinde et al., 2004). This is a foreboding prospect from the point of view of *future* earthquake activity. In addition, there are 6 volcanoes (3 active) within 120 miles of the antipode, with the nearest one (Nevado del Ruiz) a mere 95 miles distant.

The Nevado del Ruiz was responsible for Colombia's worst natural disaster in 1985 (over 25,000 people killed), but it is still volatile. Most of the people were killed by mudslides yet, incredibly, the true explosive potential of the volcano has yet to have been tapped! Nevado del Ruiz also killed about 1000 people in the **Yuma/Magdalena River Valley** when it erupted in 1845, the year that Edgar Allan Poe's "The Raven" was published. The **Yuma/Magdalena River Valley** encompasses a triangular, wedge-shaped region between two branches of the Andes Cordillera; the river flows *north* from its Andes source to the Caribbean Sea.

According to maps obtained from the USGS, *the itself, in the antipodal area, trends along two large thrust faults*. According to the thesis work of Rolon (2004), as well as the published paper by Jones (1995) a diverse variety of fault types exist in the **Yuma/Magdalena River Valley** region. The mountain ranges to its east and west represent the crumpled margins of the Nazca and Caribbean oceanic Plates which have been subducted under the South American (continental) Plate. The scenic **Yuma/Magdalena River Valley** achieved fame in the movie from 2007 entitled "Love in the Time of Cholera."



**Active volcano Nevado del Ruiz.
The Yuma/Magdalena River is to the far right.**

There is a working theory within the scientific community that as the earth approaches approximate December 21, 2012 galactic alignment there will be an increase in antipodal "harbingers" in relation to massive earthquakes and volcanoes. This is due to the recently more *direct sun to core-of-earth* communication channel as alignment approaches. *The theory involves the idea that the earth's core, receiving a signal from the sun on one side, may transfer this signal directly through to the opposite*

side of the earth. This effect is expected to be enhanced as the earth's magnetic shield continues to deteriorate as well.

The new Solar Cycle 24 will only exacerbate an already fragile geologic situation. Incredibly, just days before publication of this article we read this headline “Red alert in southern Colombia after eruption of Galeras volcano.” The eruption of Galeras appears to be *an antipodal event* related to the destructive 7.6 magnitude southern Sumatra earthquake only hours earlier which killed at least 1000 people.

A recent example of antipodal mirroring is the tragic Sichuan Province, China 7.8 magnitude earthquake of Spring 2008 and the near-simultaneous erupting of its antipodal Chilean Chaiten Volcano (which occurred in conjunction with its “own” 7.8 magnitude earthquake), according to published reports. It is thought by many that the Sichuan earthquake represented a CERN- or HAARP-induced event; this is possible, but *whatever the trigger*, natural or man-made, we are beginning to see a pattern of antipodal tectonic activity mirrored around the world! According to Finglin Niu of the Carnegie Institution “*It is possible that the strength of faults and earthquake risk is affected by seismic events on the **other side of the world.***”

[emphasis, cm]

A review of historical seismic data from the Colombian Eastern and Central Cordillera certainly suggests that *a major earthquake is imminent* (within the next few years) in the antipodal area of western Colombia, specifically the **Yuma/Magdalena River Valley** (data from Damate et al., 2004). A massive earthquake has not been seen in the specific antipodal region since the Honda quake of 1805 which killed 111 villagers along the banks of the **Yuma/Magdalena**. Another earthquake of specific historic interest is the Timana quake of November 16, 1827 which led to the appearance of numerous ground cracks through which gases were released, killing *mice and serpents*. This quake also triggered the eruption of the Purace Volcano, and there were reports of *other volcanoes exploding simultaneously*.



THE YUMA RIVER
“*Those who descended from the Sacred Mountain of Creation*”
Magdalena River, Colombia

The **Magdalena River** is also called the **Yuma River**- “Yuma” is a Spanish word derived from the Quechan (Yuma Indian tribal) language meaning “**THOSE WHO DESCENDED FROM THE SACRED**”

MOUNTAIN OF CREATION". The *Magdalena/Yuma River*, as in like manner of the Biblical Mount Hermon, has strong – and very dark - spiritual overtones.

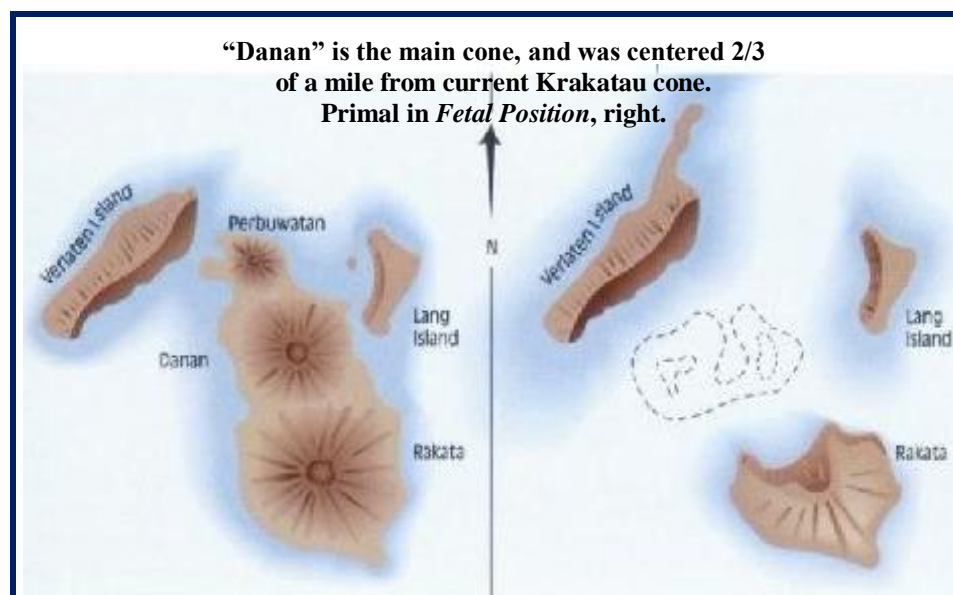
A SON IS BORN:

The number of a man.

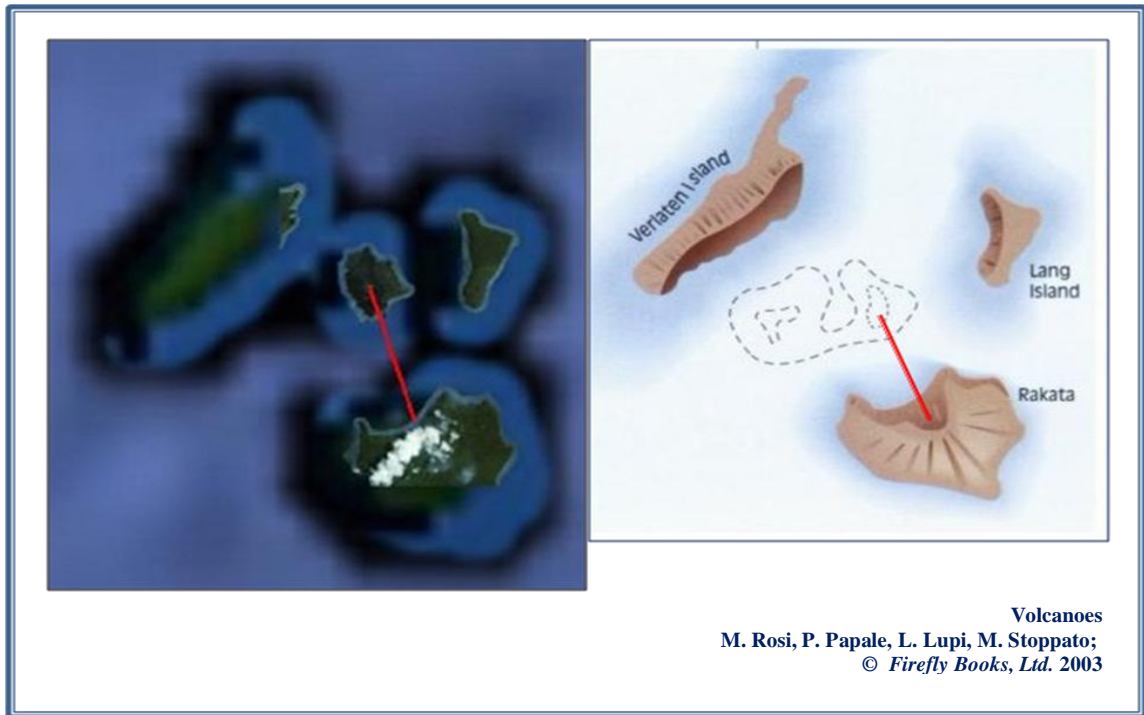
The amazing fact that the cone of the son Krakatau is located at precisely 6 degrees, 6 minutes, 6 seconds South Latitude was discussed at the conclusion of Part Three of this series. This distance is approximately two-thirds of a mile (0.666 mi.) from the central cone associated with of the eruption of the father Krakatau in 1883. The massive eruption in 1883 that shook the world resulted in the virtual disintegration of Krakatau, and the formation of a deep caldera where the volcanic vent once stood, a "hole in the ocean floor" forty times deeper than the surrounding seawater (according to geologist Charles Mandeville of the National Museum of Science). The shallowest *present-day* Sunda Strait water depth in the main channel is about 65', so that would be a very deep caldera indeed. Fortunately, there is additional evidence pointing toward a more specific original caldera/water depth post-Krakatau eruption.

These depths range from 980' or more (*Volcanological Survey of Indonesia*), 1000' or more (Johnson, 2004; Thornton, 1996), and greater than 885' (Rosi et al., 2003). The most important water depth figure, however, is an actual measurement done by the RDM Verbeek survey in October of 1883, two months after the great eruption. His crew was unable to reach the bottom of the caldera with a lead line 200 fathoms (366 meters or 1201 feet) long. Therefore, the caldera depth was greater than 1201."

An analysis of all this water depth information leaves these authors convinced that the depth of the caldera post-1883 explosion was approximately 1200'-1300', or essentially 1260'. The number "1260" is an important number in Bible prophecy, as it specifically references "*the 70th Week*" (Daniel 9:27), specifically in this case the 2nd Half, or "Great Tribulation," a period of 1260 days. It should be noted that the 1883 explosion of Krakatau registered atmospheric waves which *circled the earth 7 times* according to World News and Prophecy (2004). Seven times around the earth is 2520 degrees, *the Biblical number of division*.



The *outline* of the “eye” of the caldera post-1883 eruption represents a depth of 885’, which means that the *eye itself* is significantly deeper than this. It is our determination that a depth of the caldera eye of 1260’ is reasonable, and is certainly conceivable that this depth would be a prophetic number given the amazing coordinates of the volcanic cone itself at Latitude 6 degrees, 6 minutes, 6 seconds South.



The Eye of Primal ANAK , at birth, a depth of 1260’

This extremely deep caldera formed in a very similar manner to that of Crater Lake, Oregon, a manner which volcanologists refer to as “simple collapse following voluminous pumice eruptions.” From the base of the Crater Lake caldera (bottom of lake) to the top of the rim is about 3000’. Certainly, an explosion as massive as that of 1883 Krakatau could form a caldera less than half as deep as this! With the volcanic cone at the Latitude of 6 degrees, 6 minutes, and 6 seconds, its connection to the magma chamber straight below, and the chamber communication with the *core of the earth* (according to Charles Mandeville), could we then say that is the gateway to hell itself? The depth of the abyss, a portal to and from the underworld? Indeed we might.

Discovery Earth’s producer, Larry Hanlon, calls a “a rare window into Earth’s mantle” and “a natural laboratory” (L. O’Hanlon, 2008). There are fault lines running directly under the island. The upper magma chamber is located at a depth of about 9 km, based on S wave attenuation studies, and a larger chamber lies at a depth of 22 km and *beyond* (Harjono et al., 1989). is located directly above the subduction zone of the Eurasian Plate and the Indo-Australian Plate at a “kink” in the boundary which formed in 1988. According to Widiyontoro and Hilst (2006) the subducted slab takes a “detour” at this

location. This kink has led to crustal thinning and additional melting under Krakatau, which makes the Sunda Strait a type of “rift zone.”

This rifting, or thinning of the crust, is felt by the deep hot rocks as decompression, which causes the rocks to melt into magma. Magma then buoys upward and eventually erupts. This erupting lava is basaltic (mafic) in nature. The second type of magma is the more felsic variety (andesite to dacite) created by the Indo-Australian Plate subducting under Sumatra and Java. As the subducted rock goes deeper, it's baked by heat from Earth's mantle; trapped seawater which reaches rocks of the right pressure conditions can then help melt the rocks into magma. This is how the two distinct magma sources can *both* contribute to the chamber of ANAK. As discussed earlier in the series, *stratovolcanoes with mingled magma are the most volatile of all.*

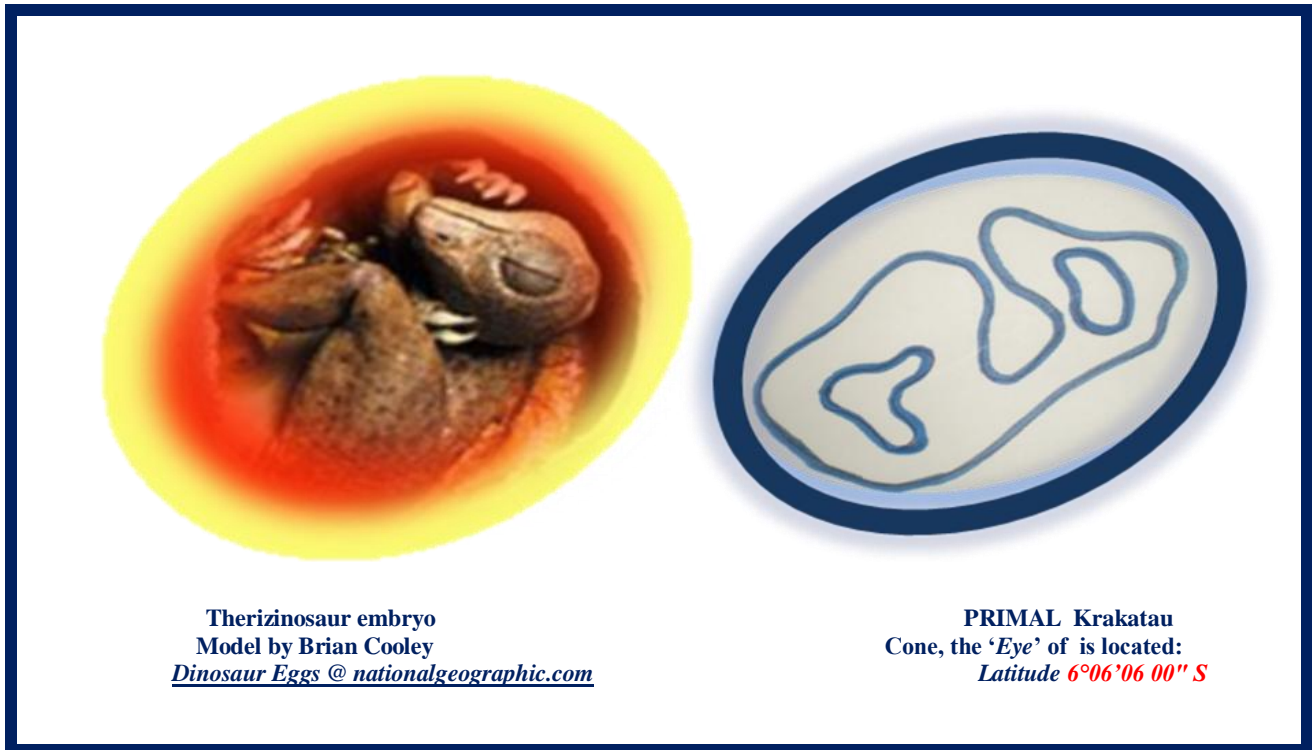
The magma source for is still mainly basaltic (dark and silica-lean) currently; however, a clue that is “going critical” will be a change in lava to a lighter-colored, silica-rich, more viscous andesitic or dacitic lava. This could *occur anytime* due to the melting going on directly underneath, which has hastened in the past 21 years since the plate boundary kink developed. This is the reason that it is feasible could soon explode violently once again, relatively soon after its last massive eruption in 1883.

A mechanism for supplying the andesitic to dacitic (felsic) magma to the chamber of the volcano could be earthquakes in the general vicinity. With the crust already so thin, earthquakes of at least 7.0 magnitude could really help speed up the process of magma channeling. Therefore, close observation of quake activity in the general Java/Sumatra and Sunda Strait region is essential. Indeed, just days before the publication of this article, a destructive 7.6 quake in West Sumatra was felt at the Krakatau monitoring station and the Australian

However, there is another, related, clue from history. According to Newhall and Dzurisin (1988) *earthquakes were felt in western Java and eastern Sumatra 5-6 years before the catastrophic 1883 eruption, and in northern Australia up to 3 years before the eruption* [emphasis, cm]. This is extremely significant due to the tectonic plate boundaries involved which are, by the way, converging faster than most other plate boundaries in the world due to intense heat from the core in this area of very thin crust.

It is absolutely frightening to recall that the devastating tsunami of December 26, 2004 was related to a massive 9.3 magnitude earthquake off of *Sumatra*. If we take this date as the “starting point” of recent earthquake activity, and move forward 5 to 6 years, it appears that we might be on the cusp of an Krakatau eruption. The activity in the general Australia/New Zealand area may also be on the rise as demonstrated by the 7.8 magnitude quake earlier this year, and the 5.3 magnitude quake near Papua New Guinea just days ago.

Anthony Wright, in his 2003 essay “Ghosts of Krakatoa” comments on his first close view of *the son rising* from the waters of the Sunda Strait, as he traveled toward it in a native sea dinghy “*we rounded a devastated cape and rejoined the current of the Selat Sunda, to face rising from the pale waters, raw and embryonic.*” [emphasis, cm]



SYNCHRONIZED CHAOS

To Charles Mandeville, ANAK “*is an angry teenager.*” Indeed, or a young man already over 1100’ high and growing several inches per week. [emphasis, cm]

“The mountain [Krakatau] is no longer silent. It is gurgling, rumbling, steaming, convulsing. Perhaps it is preparing for Revelation 16:20. In any case, *it is preparing*, once more, behind the scenes, *to be heard and seen by the entire world.* Are God’s children similarly preparing?” (Johnson, 2004) [emphasis, cm]

After the massive eruption of Krakatau in 1883, only one-third of the island remained. Could the future eruption of the son be *three times greater* than that of Krakatau his father? These authors believe that indeed it could be. All of the pieces are in place, with the main one being the “kink” of 1988. All that remains now is, first, an initial trigger to bring the felsic magma material into the magma chamber, where it will both mingle with the basaltic material and make the vent more explosive. This will serve to “get him ready.” Secondly, there must be *another trigger* to “set him off.”

The second trigger mechanism for the unleashing of the fury of primordial ANAK will be examined in Part Five. A recently identified and named astronomical body not only HOLDS the key to the Abyss, but provides the inescapable description which can aptly be understood as raging hoards already straining in anticipation of imminent release. While these creatures have been repeatedly portrayed within Biblical commentary, it is only through the end-times “increase in knowledge” spoken of by Daniel that this army and their attendant coterie of chaos can be understood.

Ancient texts of ancient witness have written and warned. Friezes, pottery and artwork are explicit. Throughout the world, indigenous cultures repeat the accounts of their wizened elders, thankful for being spared the horrors that their progeny will one day know.

And as the powers of heaven are shaken, all of mankind will quake in terror upon seeing “those things which are coming upon the Earth.” This enraged army forged in Hell itself, is bent on the consummation of and a species and the fulfillment of an ancient agenda.

Larry O’Hanlon finds a fitting motto for the *legacy* of Krakatau: is a volcano that “**ALWAYS DELIVERS.**”

Charles Manske, c_manske@yahoo.com
Sue Bradley, smbrad1229@aol.com, smbrad122@gmail.com
October, 2009

All citations will be provided at the conclusion of this series.

SPECIAL NOTE, Charles Manske:

There is a fascinating yet disturbing numerical connection between Krakatau and the Great Pyramid of Giza. The distance between the two locations is precisely 4,777 Nautical miles. This numerical connection is considered to represent a supernatural mirroring (Isaiah 19:19). Yet what might this indicate?

The number “7” is often considered to represent completion, and is also associated with the Great Flood, as 777 was the age of Lamech, the father of Noah, when he died. Lamech was the patriarch of the 7th human generation.

The number “4” typically represents a doorway or passage, may indicate the “squaring” of a prophecy or warning, and certainly evinces the 4th great eruption of demonic activity (Dr. John Phillips, The Pastoral Epistles).

*It is our contention that the **near-future massive eruption of Krakatau will trigger the simultaneous, explosive uprising of the entire Ring of Fire.** In analyzing the number “4,777” we conclude the following. The number “4” in this case represents the opening to the abyss, the release of demonic entities therein, and the squaring of the prophecies regarding the last days.*

*The number “777” represents that this “last days” period will indeed be “as in the days of Noah”, albeit a second FIRE judgment, not a judgment by water. It also represents a fulfilling of the prophecies, perhaps even a “triple,” or final completion before the prophesied Reign of the Millennial Kingdom. During this time there will be a fourth rebellion....and the **FOURTH BEAST IS ALWAYS DIFFERENT FROM THE REST.***